



Company Registration No:
4392946

VAT No: 5404 303 88

GOODWINCH LIMITED

1 Oakleaf Way. Tree Beech Rural Enterprise Park
Barnstaple. EX32 7NZ England

Telephone: (01363) 82666 International: +44 1363 82666

Website: www.goodwinch.com Email: sales@goodwinch.com

Importers, Exporters, Wholesale Distribution and Retailers of Winches
and Accessories

The Goodwinch TDS Air Operated Freespool Fitting Instructions

Thank you for choosing to buy our Air Freespool kit. It is compatible with all TDS winches.

Your kit contains the following items:

Air Clutch. Air Solenoid. 3 x Air Fittings. 5m Air Pipe.

On/off Switch. Aircraft Switch cover.



1. Remove end cap from winch gear box: 3 x 4mm Allen Cap Heads



2. Loosen grub screw at top of gearbox at 12 o'clock.

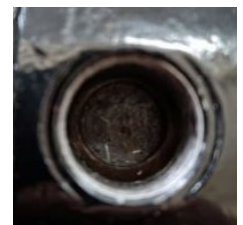


3. Unscrew manual freespool and remove.

4. Take rubber 'O' ring off manual version and put on air clutch.



5. Check threads in housing are clean.



6. Check spacer doesn't fall out behind 3mm grub screw.



7. Screw in Air Clutch,



Tighten slightly with a 22mm spanner, ensuring that the air fitting is accessible.



8. Then tighten 3mm grub screw.



9. Finally replace gearbox end cap.



10. Air and Electrical control



The solenoid pictured above has three terminals - two vertical and one horizontal.

The internal coil is connected between the two vertical terminals. Uses standard 6.5mm female spade crimp terminals to attach the wires to the solenoid. Connect one terminal to the vehicle ground, (eg: bodywork) and the other, via a switch to battery positive. It does not matter which way round you connect the terminals.

Disconnect the pneumatic hose from the freespool. When you close your switch, so long as there is pressure in the compressor reservoir you will be able to hear air escaping from the end of the tube.