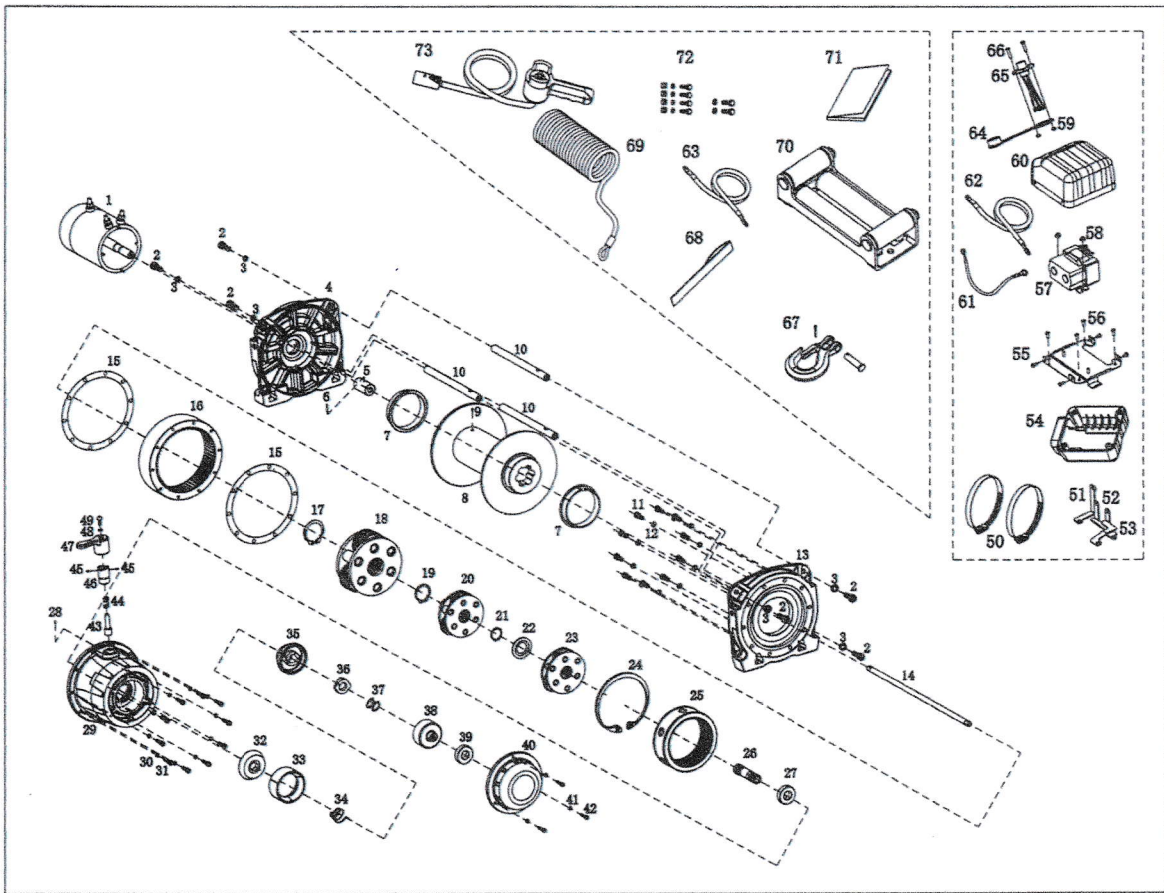


VIII Replacement Parts List



105-16.50

NO	Name of parts	Qty	NO	Name of parts	Qty	NO	Name of parts	Qty
1	12V DC motor 24V DC motor	1	27	Bearing	1	53	Connecting plate F2	1
2	Headed inner hexagon screw	6	28	Grub inner hexagon screw	1	54	Lower solenoid box	1
3	Spring shim	6	29	Gear box	1	55	Connecting base plate	1
4	Motor support rack	1	30	Spring shim	10	56	Round-headed inner hexagon screw	8
5	Connecting socket	1	31	Headed inner hexagon screw	10	57	Magnetic switch	1
6	Spring pin	1	32	Wedge shape support	1	58	Hexagon lock nut	2
7	Drum bushing	2	33	Braking plate	1	59	Hexagon nut	2
8	Drum	1	34	Spiral spring	1	60	Upper cover	1
9	Grub inner hexagon screw	1	35	Wedge shape piece B	1	61	Grounding wire	1
10	Tie bar	3	36	Wedge shape piece A	1	62	Power wire +	1
11	Headed inner hexagon screw	9	37	C-ring	2	63	Power wire -	1
12	Spring shim	9	38	Braking clutch base	1	64	Waterproof cover	1
13	Body support rack	1	39	Bearing	1	65	Control wire set B	1
14	1 st shaft	1	40	Braking cover	1	66	Round-headed inner hexagon screw	2
15	Anti-leak seal	2	41	Spring shim	3	67	Hook set	1
16	3 rd ring gear	1	42	Headed inner hexagon screw	3	68	Handsaver strap	1
17	C-ring	1	43	Clutch lever	1	69	Wire rope	1set
18	3 rd carrier	1set	44	Pressed spring	1	70	Roller fairlead	1set
19	C-ring	1	45	Spring pin	2	71	Manual	1set
20	2 nd carrier	1set	46	Clutch sleeve	1	72	Screw package	1set
21	C-ring	1	47	Clutch knob	1	73	Controller	1set
22	Copper washer	1	48	Spring shim	1			
23	1 st carrier	1set	49	Round-headed inner hexagon screw	1			
24	C-ring	1	50	Clamp	2			
25	1 st & 2 nd ring gear	1	51	Connecting plate A	1			
26	1 st pinion	1	52	Connecting plate F1	1			